

Hauptwerk IX includes

A major change to the user interface. This is significantly different from previous versions of Hauptwerk and more in the style of recent changes in operating system user interfaces (both MacOS and Windows). The user interface can be “simplified”. The interface to some of the less frequently used parts of the system can be turned off (or on) dynamically and features which are turned off don’t appear in the user interface.

A new simpler way to use the multi-channel audio system.

The interface simplification facility and simpler audio routing system enable a simpler user interface to be provided which is the default for new installations.

The documentation has been restructured to make it more accessible. There are now two volumes, an installation and user guide which includes the things most users will need (including simple audio routing) and an advanced guide and reference with things many will not need (including the full audio mixer). As ever, the documentation is clear and concise; well worth reading (even for experienced users).

The text of some of the messages and on-screen information has been improved.

There are few minor enhancements and a few bug fixes to minor issues from previous releases.

Hauptwerk IX is easy to install and migrates all user settings from earlier versions of Hauptwerk. (In those few cases where settings from earlier versions of Hauptwerk do not exist in version IX, they are not migrated.)

User interface

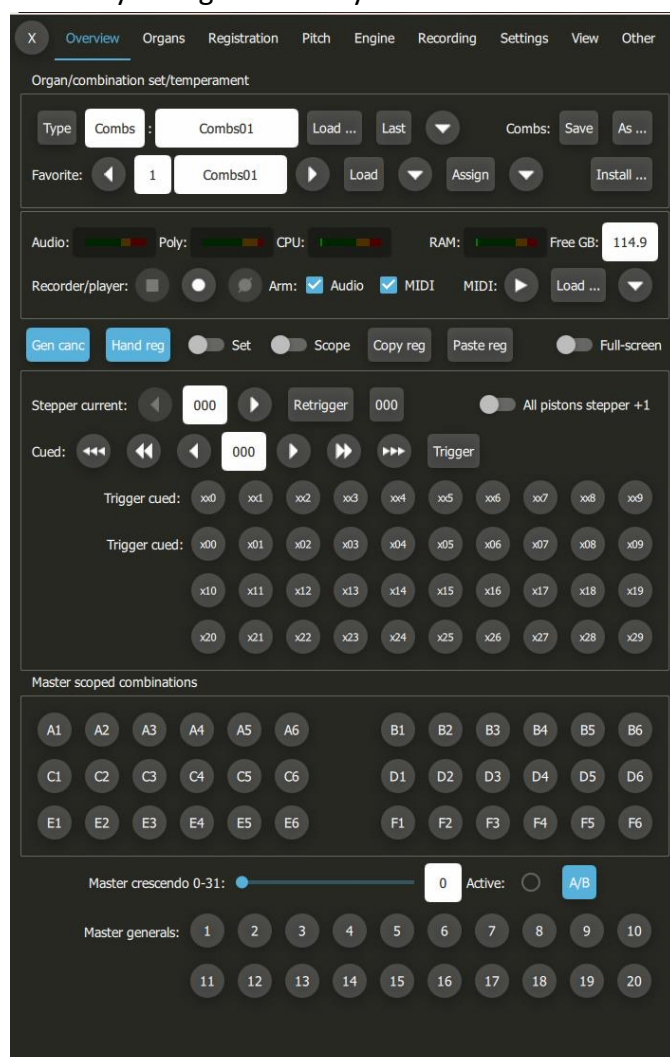
The top line menu (in the main console window) has been drastically changed and only a Touch Menu button and a button to display the user documentation remain.

The greatly enhanced Touch Menu is now how Hauptwerk’s functions are accessed. I admit that initially I was uncomfortable with the idea of this change. Many of the other computer applications I use continue to have top line menu systems (with ever expanding drop-down sub menus) - this was going to be different. Like many existing users of Hauptwerk, I knew how to find the functions that I needed from the top line menu; with a different user interface I would have to discover afresh where and how the functions I wanted were accessed.

The Touch Menu is organised into tabs, each tab gathers together related functions and information. The Large Control Panels are gone too, their functions are provided through Touch Menu tabs. Mini Control Panels, now called Control Panels, provide some specific functions which can be docked on the main Hauptwerk console display and used directly (rather than going through the Touch Menu). Version IX presents a more rational and simpler interface to the user, albeit a *different* interface.

Although I had used the Touch Menu in version VIII, I had continued to use the top menu line and various control panels. In trying out Hauptwerk IX, I had to use the Touch Menu, and after quite a short time I found that it convenient and easy to use.

The Touch Menu can be made to display in any of the Hauptwerk console windows or to float in its own



window. By default, it appears on the left of the main console window. I have tried using it on the right of my second console window (on the right touch screen) and found this convenient. I also tried putting it in console window 3 and used the Spacedesk (free) application to share the part of the extended desktop of my Windows system which contains Hauptwerk's console window 3 with my iPad. The Touch Menu could be used from the iPad, leaving my two touch monitors to be used by virtual organs for stop controls. (The Duet application would have provided the same functionality.)

Because the Touch Menu can be made to appear and disappear at the press of a toggle button, it is possible to have a much clearer screen for the *player* (when playing the organ rather than interacting the Hauptwerk system). The toggle for the Touch Menu can be assigned (auto detected) to a midi button (a thumb piston for example), enabling the player to recall and hide the user interface at their convenience. So, the Hauptwerk user interface can be made to disappear when you are playing a virtual organs, leaving your screen(s) clear for stops and organ controls.

The Touch Menu is easy to navigate and I found most of the things I was looking for directly. It is worth spending a little time looking at the Release Notice for version IX: part of this gives some highlights of the improved Touch Panel. I would draw your attention to these:

- The touch menu has a new "Overview" tab, which brings the main controls together in one place.
- Functions that select things directly from lists (such as favourite organs), which previously had sub-menus for the purpose on the main menu, now have downward-pointing arrow buttons on the touch menu and control panels for popping up their lists as menus.
- Most of the commonly-used buttons on the touch menu (and their equivalents on control panels) now have dedicated (computer) keyboard shortcuts for convenience.
If you used computer keyboard keys to interact with Hauptwerk the assignment of functions to keys has been significantly changed.

There is a new setting (for Windows) is to hide the top-line menu and the common Windows top-line (window size, close buttons) when in full screen mode; on Macs this is normal behaviour whenever an application is in full screen mode.

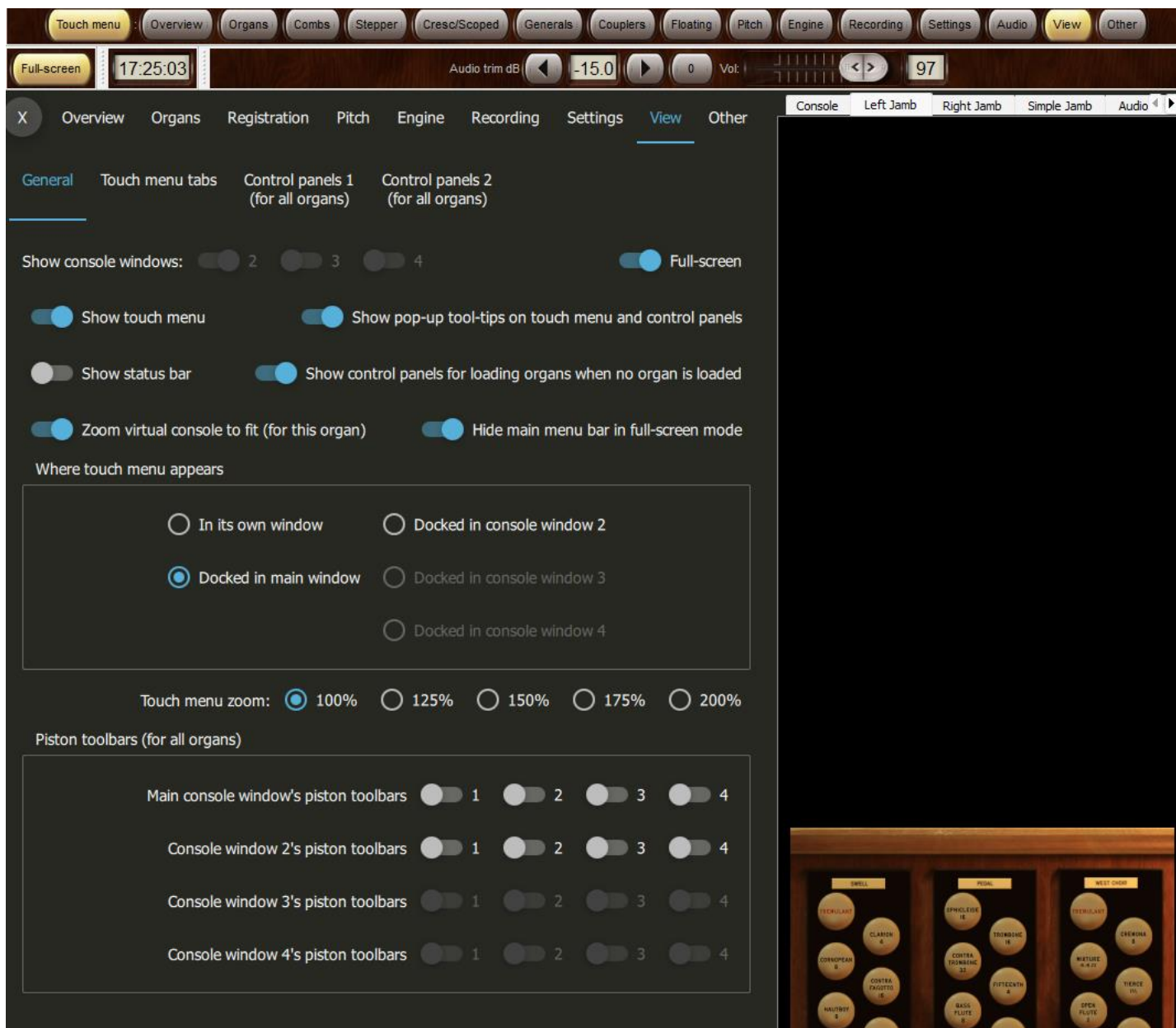
The bottom status line is now turned off by default. Its contents have been revised.

One of the new control panels ("View: hide/show Touch menu tabs") provides a single line set of buttons which open the Touch Menu at the tab corresponding to the button. The buttons are shown below.



The control panel is adjusted by Hauptwerk to show only tabs for the parts of the system that are presently enabled. It provides rapid access to all of Hauptwerk's functionality, essentially providing an equivalent to the "old" top line menu.

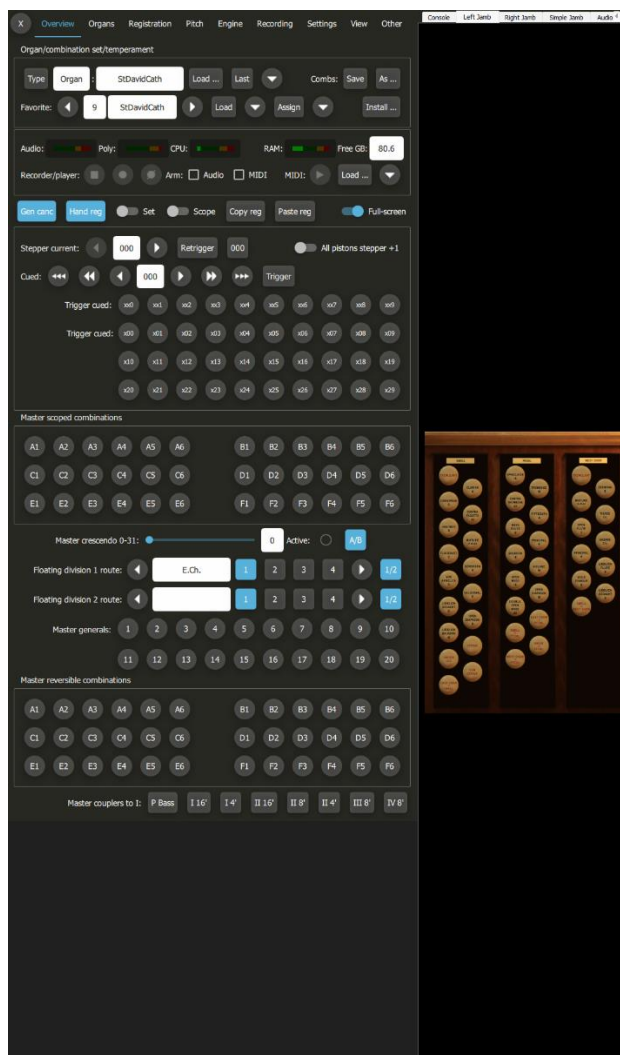
Together with the full-screen toggle, clock and “volume control”, this works very well as my interface for many of the sample sets I play.



At the bottom of the screen, I have sometimes included the two control panels to manage the audio system.



I have also used the system with a piston configured to bring the Touch Menu to the screen and to remove it. The left image shows the console for playing with no Hauptwerk controls. When the piston to bring the Touch Menu to the screen is pressed, the Touch Menu appears and disappears on a second press of the piston.



Migrating to the new user interface

Installing Hauptwerk IX migrates your Hauptwerk system's selection of control panels etc. to their version IX equivalents. However, the position and state of the control panels are set to their defaults to ensure that they dock and that the main console window is not made wider. When I installed version IX, I found that my carefully previously configured interface to Hauptwerk VIII looked a bit messy. This was because some of the control panels I was using no longer exist in Hauptwerk IX or had changed size. I was able to tidy things up reasonably quickly, but after a short time, I decided I wanted to revise my default screen layout to make better use of the Hauptwerk IX interface. It took me a few attempts to get an arrangement I liked, and this will continue to evolve for a while longer as I become more familiar with version IX.

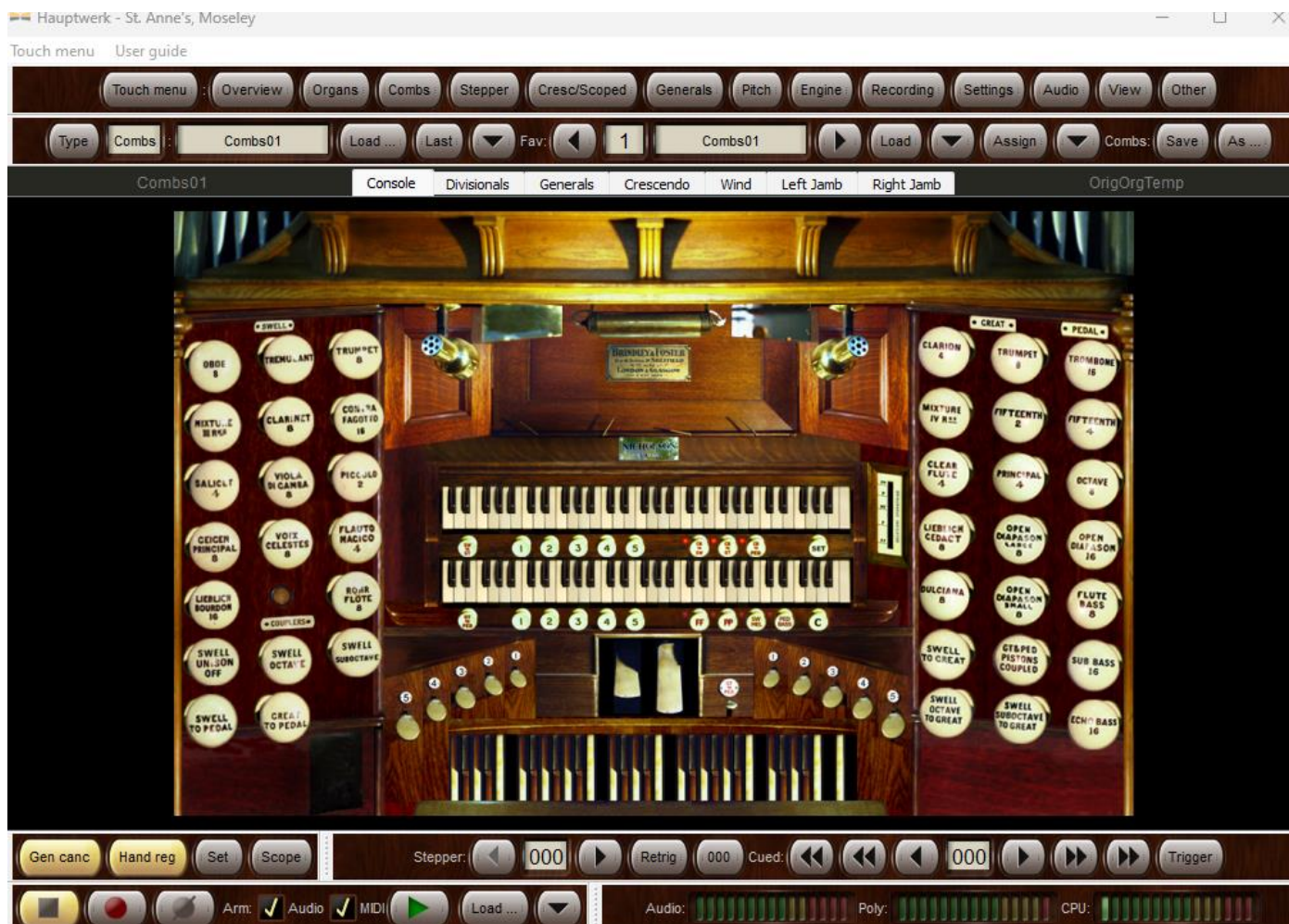
Simplifying the use of Hauptwerk

Hauptwerk IX has a feature which allows the user interface to be simpler by disabling or restricting parts of the user interface which some users may not need (or not need initially).

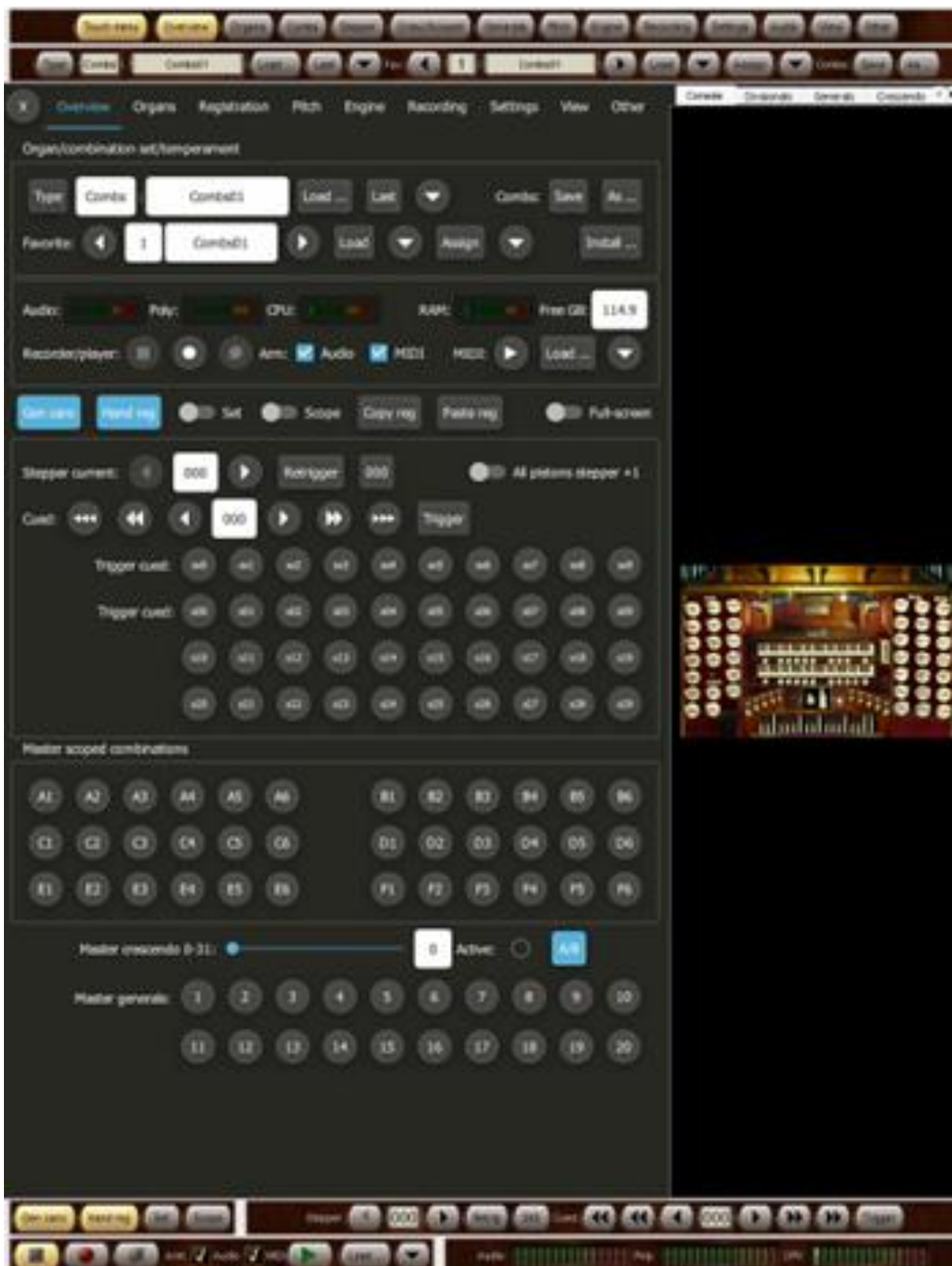
The Simplify screen (Touch Menu | Settings | General: Preferences | Simplify) allows various parts of the system to be disabled or enabled. Fifteen parts of the system may each be disabled by ticking the item on the Simplify screen and enabled by unticking them. These include items such as Master Reversible Pistons, VST support, LCD support and so on. Preset buttons at the bottom of the screen tick or untick selections of the options that are suitable for Most Users, for Maximum Simplicity, and for Maximum Flexibility. When features are turned off, they do not appear in any parts of the user interface, including the Touch Menu. Hauptwerk IX does not display menu items that are not relevant to the platform being used.

When I upgraded to version IX, the Simplify screen was shown and the default items ticked allowed me to continue using Hauptwerk as before, no features I used were disabled.

For new installations, or for configurations which have been “factory reset”, the system is configured with Maximum Simplification selected, and the selection screen is not shown. When the new or reset configuration is first started you are taken through a few simple questions (type of console being used, Midi settings, and audio device), and then prompted to load an instrument. When the organ is loaded the cache is regenerated and then it is ready to play. You must then close the Touch Menu, autodetect the keyboards, draw a stop and play. The audio is being managed by the simple audio routing system. Here is the standard screen for the new installation with St Anne’s loaded.



It has all the functions you might need as you start to use Hauptwerk, though I would have wanted the overall audio output level control included. In full screen mode the top two lines are not shown. The Touch Menu tab line gives immediate access to the corresponding Touch Menu tab.



In the advanced edition, one of the items in the Simplify screen is a selection which when ticked replaces the interface to multi-channel audio output system with a simpler, more constrained interface that does not use the audio mixer interface from Hauptwerk VIII. It is suggested that this simple audio routing will meet the requirements of most Hauptwerk users. Unticking it re-enables the full mixer interface to the multichannel audio output system. Switching to the simple audio routing output system does not affect the full audio system, no settings in the full audio system are changed. This allows existing users to try the simple audio output system without losing any of their settings in the full audio system. When switching back from the simple to full audio output system, the full system is unchanged. I tried this and it works.

I have written a separate note describing the new Simple Audio Routing interface and how it may be used.

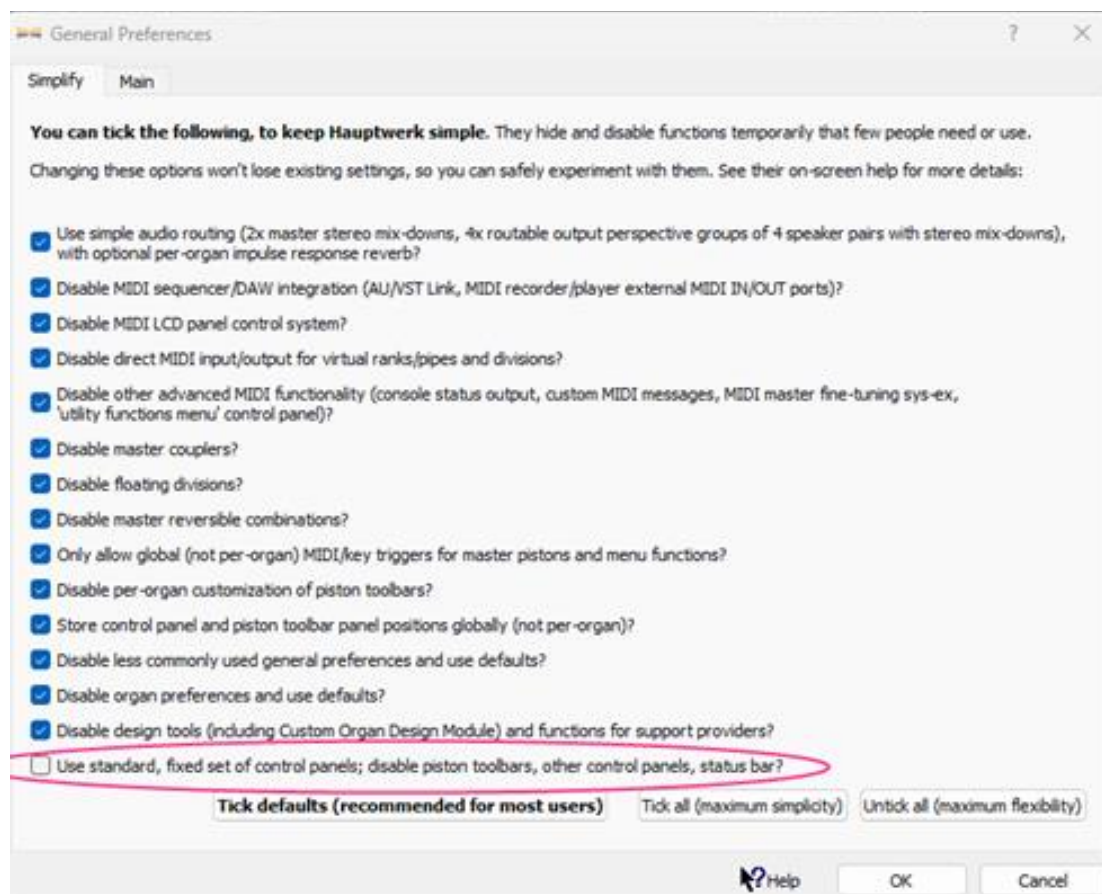
Experience

During my early access to the system, I have not experienced any problems. The excellent sound quality has not changed since version VIII. The full audio and simple audio routing behaved as expected. The only issue I had was with the migration of the layout of my Hauptwerk control panels from VIII to IX. With the “new” user interface, these needed some minor changes and adjustments. During the trial, I decided to make more radical changes to take advantage of the features offered with the enhanced Touch Menu.

The improved Touch Menu and its ease of access may make using add-on devices (such as the Launchpad) for interacting with the Hauptwerk system itself less desirable. (Launchpads will continue to be very valuable for stop control and pistons where these are not provided in a midi console.)

The simple audio routing system is worth looking at: it may make things easier for many users. For those migrating from Hauptwerk VIII, all the voicing settings from Hauptwerk VIII are migrated to the perspective 1 settings of simple audio routing in version IX. This will help those who wish to try using simple audio routing, keeping their preferred voicing from earlier versions. Of course, all the voicing and audio settings are migrated unchanged from earlier versions of Hauptwerk into the full audio system in Hauptwerk IX. It is worth noting that changes in voicing in Hauptwerk IX are not synchronised between the full audio output system and the simple audio routing system: the two are independent of each other.

I tried running with the maximum simplicity but found that I needed to untick the final option on the Simplify screen to display the control panels I wanted to include in my interface.



The upgrade process was very straight forward and took place without incident.

(I took a Hauptwerk backup of the version VIII system before I started the migration to IX. I also had (and keep) the version VIII installer for Hauptwerk as the only supported way to restore the system back to Hauptwerk VIII would be to reinstall the Hauptwerk VIII system and restore the Hauptwerk VIII backup. I did not need to do this but like the comfort of having a way back.)